

easyFTTH is a business and network management system for Internet Service Providers (ISP's) designed to automate subscriber and network services.



### easyFTTH Cloud Overview

**Sales:** Add and manage subscribers.

**Provisioning:** Create work orders to schedule subscriber installations.

**Activation:** Activate new subscribers onto the network.

**Authentication:** The ONT MAC address is entered to authenticate the subscriber.

**Subscriber rate plans:** Create multiple cost/performance plans for subscribers to choose.

**Fixed broadband billing:** Subscriber pre- and post-paid billing, with invoicing, collection notification and past-due automatic disable.

**Additional service sales:** Access code generation for the sale of additional data when a monthly data cap is imposed.

**Network monitoring:** Detection and alarm of easyFTTH gateway and subscriber network to CPE data link failures.

**Customer relationship management:** A CRM portal that subscribers use to access account data and submit a support request.

**Helpdesk:** Support staff responds to ticket requests, and escalate issues to other staff and management.

**Reports:** Report categories include billing, maintenance, data traffic and support.

**For further information:** See the easyFTTH Cloud data sheet for Cloud features.

### Turn-key technology to manage an ISP's subscribers

Until recently, starting an ISP business required many years of network experience with a high degree of technical skill. The current generation of cloud managed ISP systems has reduced the technical knowledge requirements to start an ISP business. Now easyFTTH has further simplified the process of starting and growing a fiber to the home ISP business. easyFTTH controllers are self-configuring and the easyFTTH Cloud management system is as simple to use as accounting software. The only technical skills required are for the configuration of fiber network equipment.

### Functions of the easyFTTH access controller

Each easyFTTH router is a dedicated access controller that processes several tasks, which are essential for Internet subscriber management:

- Authenticate each subscriber ONT onto the network.
- Apply the rate plan that each subscriber chooses.
- Enable/disable access according to the billing system status.
- Monitor the connection status with each subscriber ONT.
- Monitor the network for failures and alert the administrator.
- Update the Cloud with network status and traffic.
- Captive portal to display CRM access and off-line status.
- Five staff role cloud login accounts.

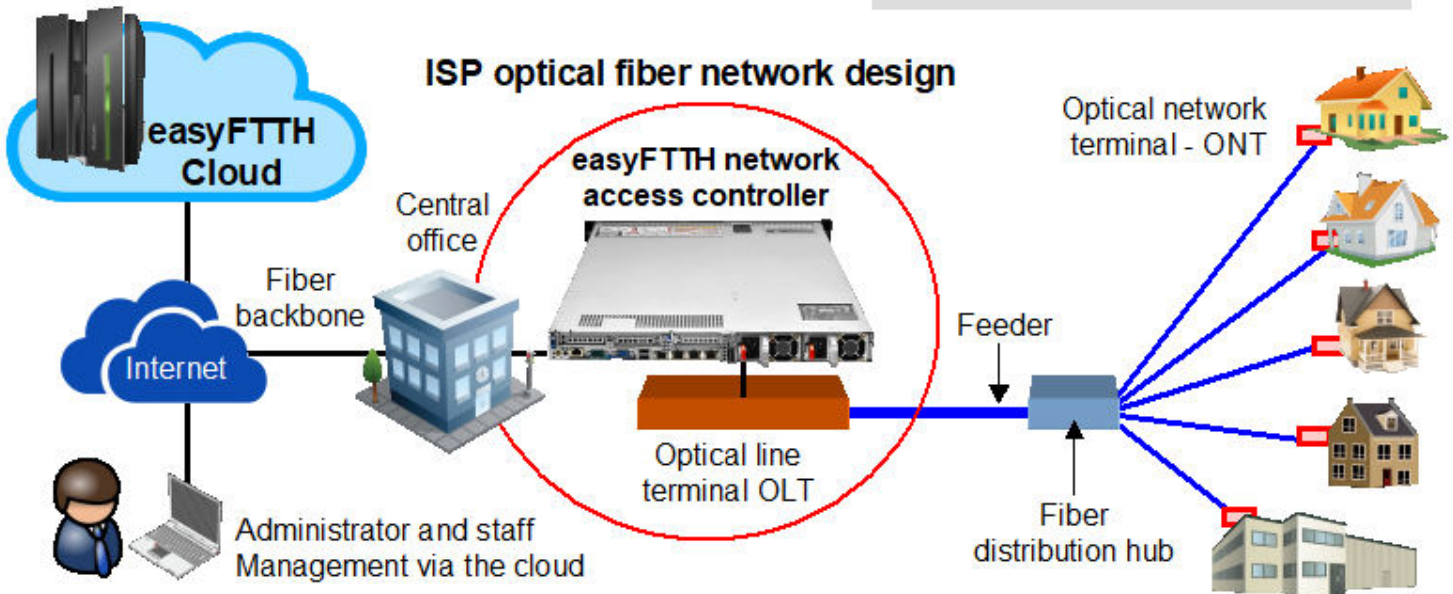
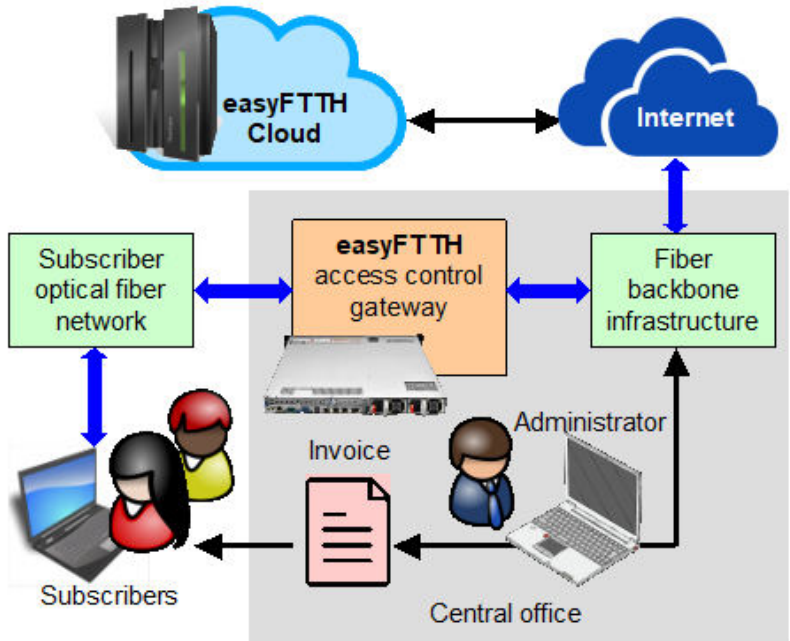
### A world-class ISP management system with no charges

ISP's are accustomed to paying a fee per subscriber when using a cloud management system. The easyFTTH Cloud service is included free with each easyFTTH access controller. There is no limit to the number of subscribers and multiple easyFTTH access controllers can be added to one easyFTTH Cloud account. This is possible because each easyWISP controller is a computing element in the Cloud network and processes all access transactions. The Cloud manages batch tasks, which greatly reduces the cloud-operating overhead. After initialization each easyFTTH controller manages network access without Cloud supervision.

**easyFTTH in use:**

The easyFTTH access controller is installed in the central office to control the data flow between the subscribers and the Internet. The administrator connects to the easyFTTH Cloud to add and bill subscribers. The Cloud will alert the administrator if any network problem occurs.

Multiple easyFTTH controllers can be added to one easyFTTH Cloud account for applications where it is necessary to manage multiple central offices. The easyFTTH Cloud manages multiple easyWISP controllers transparently without any type of configuration or interaction by the administrator.



**FTTx-10G Technical Specifications**

**Features**

- ▶ For use with the Cloud management system
- ▶ The cloud monitors each product for failure
- ▶ Turn-key operation
- ▶ Authentication of each fiber ONT
- ▶ Monitoring of each ONT link for failure
- ▶ Locally stored subscriber database
- ▶ Application of the rate plan for each subscriber
- ▶ Activate/deactivate subscribers on Cloud command
- ▶ Monitor for any attempt of unauthorized access

**Network**

- ▶ WAN1, fiber 10 Gb
- ▶ LAN1, fiber 10 Gb
- ▶ LAN2 to LAN5, RJ-45 Gb

**Throughput**

- ▶ 10 Gb/s for subscriber data traffic

**Authentication**

- ▶ ONT MAC address authentication

**Operation**

- ▶ Commercial grade equipment suitable for installation in any non-industrial environment, 32degF to 100degF

**Power**

- ▶ 110v/220v supply, 250W

**Dimensions: 19in rack mounting**

- ▶ Enclosure: 69.9cm x 43.5cm x 4.3cm

**Warranty**

- ▶ 1 year for product defects

Call 1-800-213-0106 for further information. Fire4 Systems Inc, 6073 NW 167 St., Suite C12, Hialeah, FL 33015, USA.